



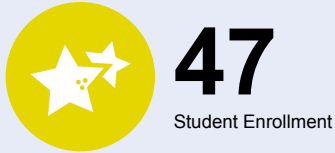
OREGON AT-A-GLANCE SCHOOL PROFILE

The Cannon Beach Academy

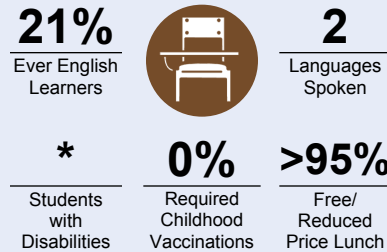
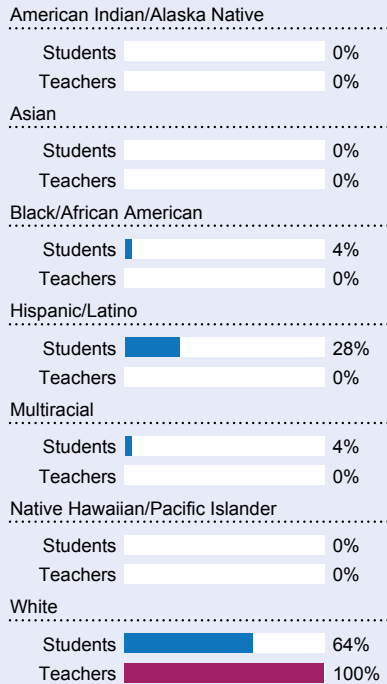
2021-22

PRINCIPAL: Ryan Hull | GRADES: K-5 | 3781 S Hemlock St, Cannon Beach 97110 | 503-440-9878

Students We Serve



DEMOGRAPHICS

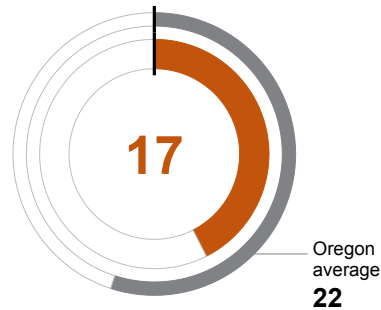


*<10 students or data unavailable

School Environment

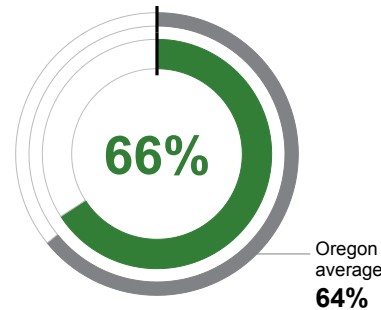
CLASS SIZE

Median class size.



REGULAR ATTENDERS

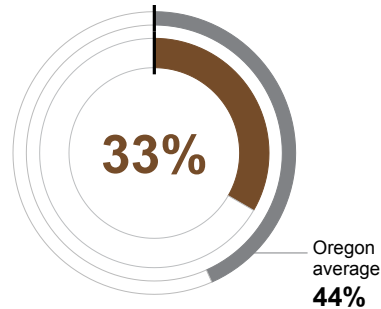
Students who attended more than 90% of their enrolled school days.



Academic Success

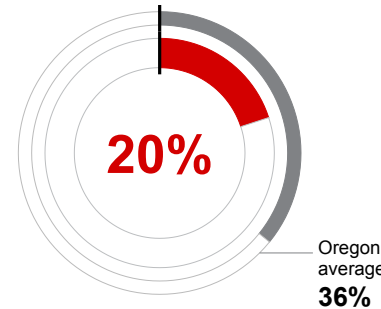
ENGLISH LANGUAGE ARTS

Students meeting state grade-level expectations.



MATHEMATICS

Students meeting state grade-level expectations.



Academic Progress

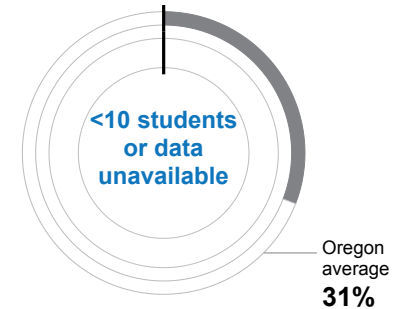
INDIVIDUAL STUDENT PROGRESS

Year-to-year progress in English language arts and mathematics.

Data not available in 2021-22

SCIENCE

Students meeting state grade-level expectations.



School Goals

Our mission is to provide expanded high quality educational choices within the public school system. A balanced education to nurture the development of the whole child, encouraging each child to become a life-long learner and a benefit to society. The school places equal emphasis on a solid academic foundation, artistic expression, attention to the inner emotional life of each child, social development and responsibility, cultural diversity, a healthy lifestyle and appreciation of the environment and the arts.

State Goals

The Oregon Department of Education is partnering with school districts and local communities to ensure a 90% on-time, four year graduation rate by 2025. To progress toward this goal, the state will prioritize efforts to improve attendance, provide a well-rounded education, invest in implementing culturally responsive practices, and promote continuous improvement to close opportunity and achievement gaps for historically and currently underserved students.

Safe & Welcoming Environment

The Cannon Beach Academy provides focus on children who have been historically underserved, due to factors such as race, ethnicity, culture and socioeconomic background.

Opportunities for parents and members of the community to be directly involved in the school operation and make significant contributions to their children's educational environment.



OREGON AT-A-GLANCE SCHOOL PROFILE CONTINUED

The Cannon Beach Academy



Outcomes

Our Staff (rounded FTE)



2

Teachers



1

Educational assistants



0

Counselors/
Psychologists



95%

Average teacher retention rate



0%

% of licensed teachers with more than 3 years of experience



No

Same principal in the last 3 years

REGULAR ATTENDERS

American Indian/Alaska Native	<10 students or data unavailable
Asian	<10 students or data unavailable
Black/African American	<10 students or data unavailable
Hispanic/Latino	77%
Multiracial	<10 students or data unavailable
Native Hawaiian/Pacific Islander	<10 students or data unavailable
White	57%
Free/Reduced Price Lunch	66%
Ever English Learner	80%
Students with Disabilities	<10 students or data unavailable
Migrant	<10 students or data unavailable
Homeless	<10 students or data unavailable
Students in Foster Care	<10 students or data unavailable
Talented and Gifted	<10 students or data unavailable
Female	69%
Male	62%
Non-Binary	<10 students or data unavailable

ENGLISH LANGUAGE ARTS

<10 students or data unavailable
<10 students or data unavailable
<10 students or data unavailable
<10 students or data unavailable
<10 students or data unavailable
<10 students or data unavailable
<10 students or data unavailable
33%
<10 students or data unavailable
<10 students or data unavailable
<10 students or data unavailable
<10 students or data unavailable
<10 students or data unavailable
<10 students or data unavailable
<10 students or data unavailable
<10 students or data unavailable
<10 students or data unavailable
<10 students or data unavailable

MATHEMATICS

<10 students or data unavailable
<10 students or data unavailable
<10 students or data unavailable
<10 students or data unavailable
<10 students or data unavailable
<10 students or data unavailable
<10 students or data unavailable
20%
<10 students or data unavailable
<10 students or data unavailable
<10 students or data unavailable
<10 students or data unavailable
<10 students or data unavailable
<10 students or data unavailable
<10 students or data unavailable
<10 students or data unavailable
<10 students or data unavailable
<10 students or data unavailable

About Our School

BULLYING, HARASSMENT, AND SAFETY POLICIES

1. Students have the right to expect that they will spend the school day free from the fear of bullying, harassment and intimidation. Bullying de-values, isolates, frightens and affects an individual's ability to achieve. Our policy is to teach students to deal with conflict in a positive way, and thereby build confident and capable leaders of tomorrow. We aim to help our students to identify bullying when it happens and to speak up to trusted adults about it after it occurs.

EXTRACURRICULAR ACTIVITIES

The Cannon Beach Academy will have the following opportunities this year:

- D&D Club
- Run Club
- Garden Club
- Art Club
- Oregon Battle of the Books

PARENT ENGAGEMENT

Being a public charter school, parents have the opportunity to choose our school so engagement begins day one. There are many opportunities to support our school from helping with getting our playground ready for the school year to being involved in our Parent/Teacher Organization. Our PTO provides support to our students and school by:

- Fundraising
- Organizing Social interactions
- setting up and supporting field trips
- supporting teachers in many ways.

COMMUNITY ENGAGEMENT

We have many families and organizations in our community that provides support and opportunities for our students and families. Here are a few that support us:

- City of Cannon Beach
- Coaster Theatre
- Haystack Awareness Program
- Cannon Beach Food Bank
- Sleepy Monk Coffee Roasters
- Bruce's Candy Kitchen
- Cannon Beach Books
- Tolovana Arts Association